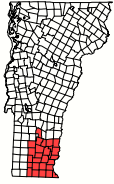
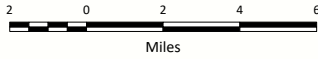


# 2024 Windham Regional Plan



139 Main St • Suite 505 • Brattleboro, VT 05301  
(802) 257-4547 www.windhamregional.org



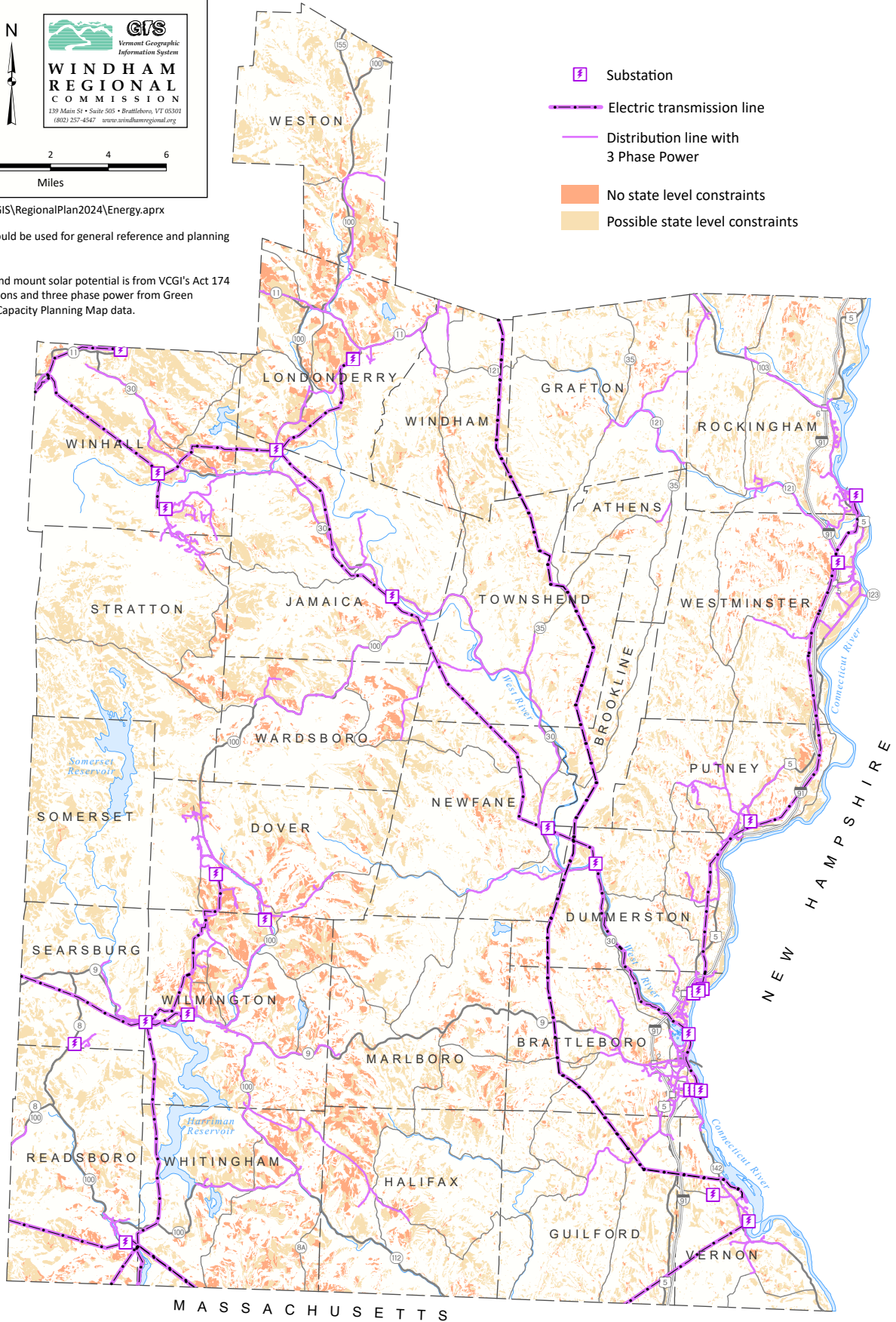
# Ground Mount Solar Potential

- Substation
- Electric transmission line
- Distribution line with 3 Phase Power
- No state level constraints
- Possible state level constraints

September 2024; u:\GIS\RegionalPlan2024\Energy.aprx

Note: This map should be used for general reference and planning purposes only.

Data sources: ground mount solar potential is from VCGI's Act 174 data, 2022; substations and three phase power from Green Mountain Power's Capacity Planning Map data.



M A S S A C H U S E T T S